



**Pedestrian and Bicycle
Information Center**

Quick Build Networks for All (Part I)

Alia Anderson Toole Design

Amar Mohite Harris County Precinct One

John Brazil City of San Jose

Peter Bennett City of San Jose

Matthew Dyrda City of Minneapolis

Meet the Panel



Alia Anderson
Toole Design



Amar Mohite
Harris County
Precinct One



Matthew Dyr Dahl
City of
Minneapolis



John Brazil
City of San Jose



Peter Bennett
City of San Jose

Part I (Today)

Part II (Tomorrow)

Housekeeping

- ⇒ **Submit your questions**
- ⇒ **Webinar archive: www.pedbikeinfo.org/webinars**
- ⇒ **Certificates and professional development hours**
- ⇒ **Follow-up email later today**
- ⇒ **Join us for Part II tomorrow**

Quick Build Networks for All: **OVERVIEW**



OUTLINE

- What is Quick Build?
- Why Do It?
- Key Considerations
- Challenges
- Ingredients for Success



WHAT IS QUICK BUILD ALL ABOUT?



TRENDS



Vision Zero

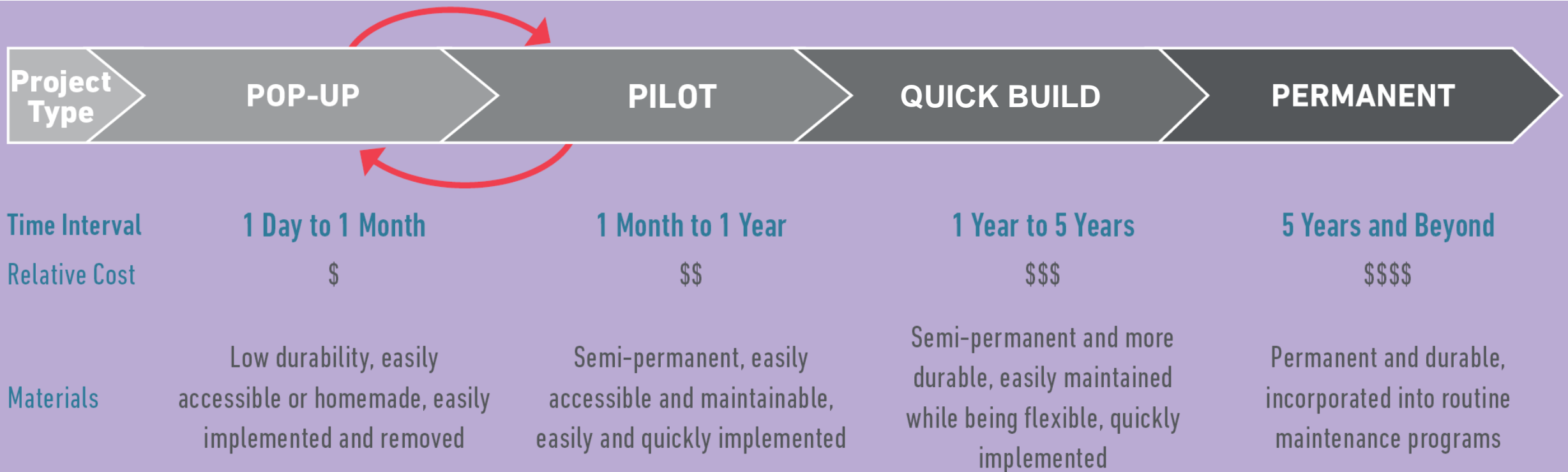


Growing demand for active, sustainable transportation

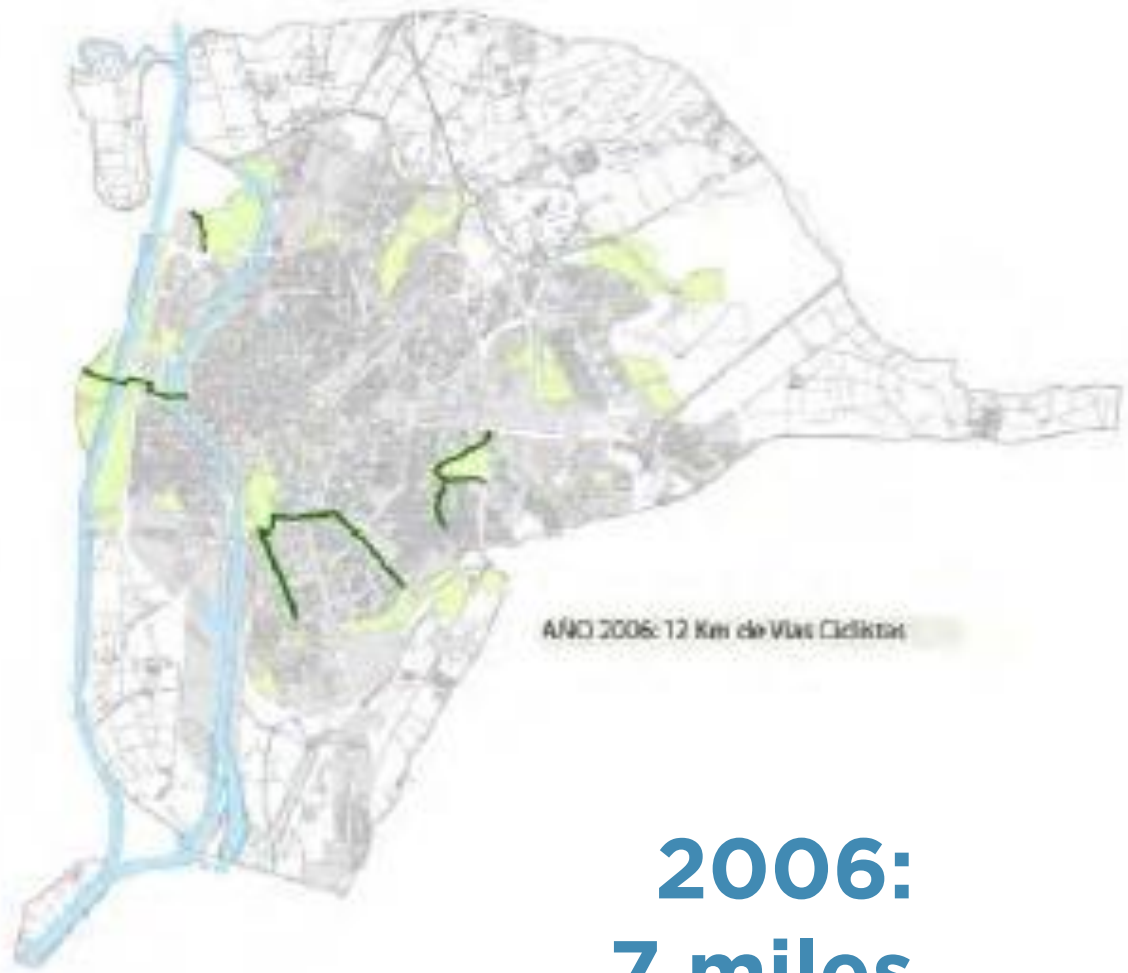


Cost

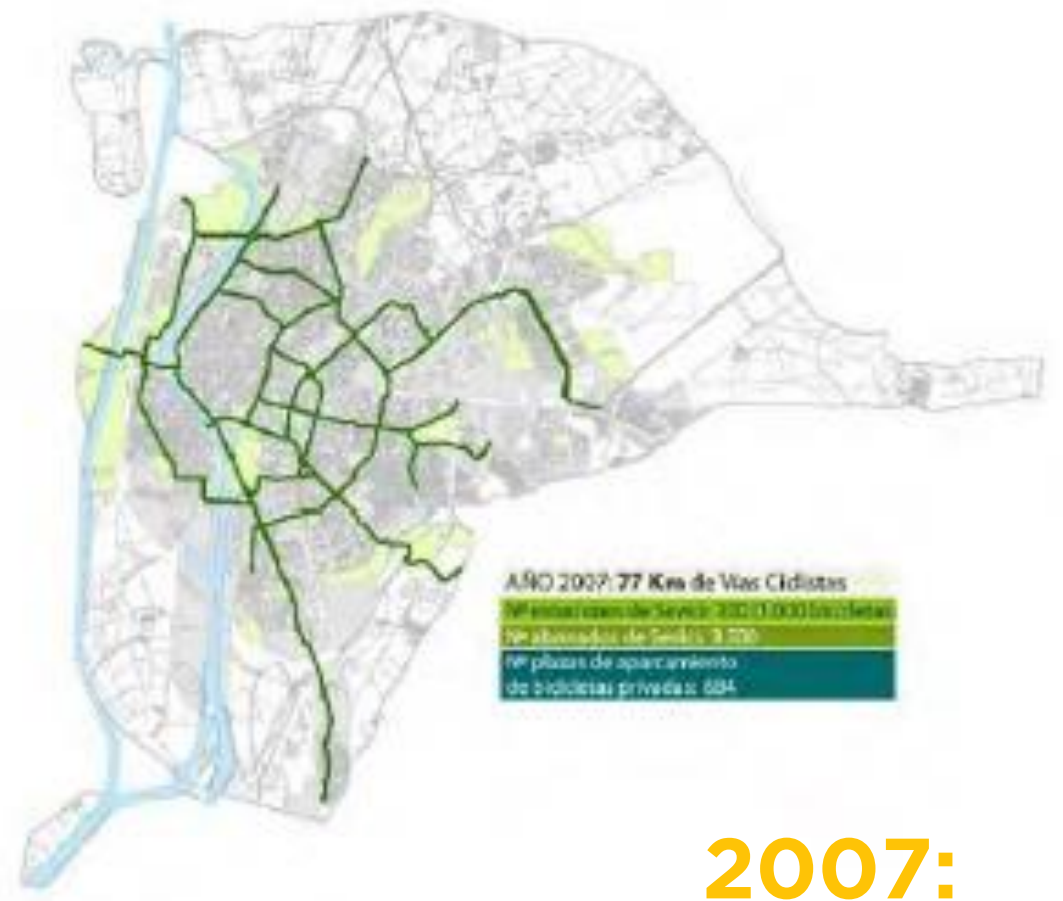
TERMS



SEVILLE

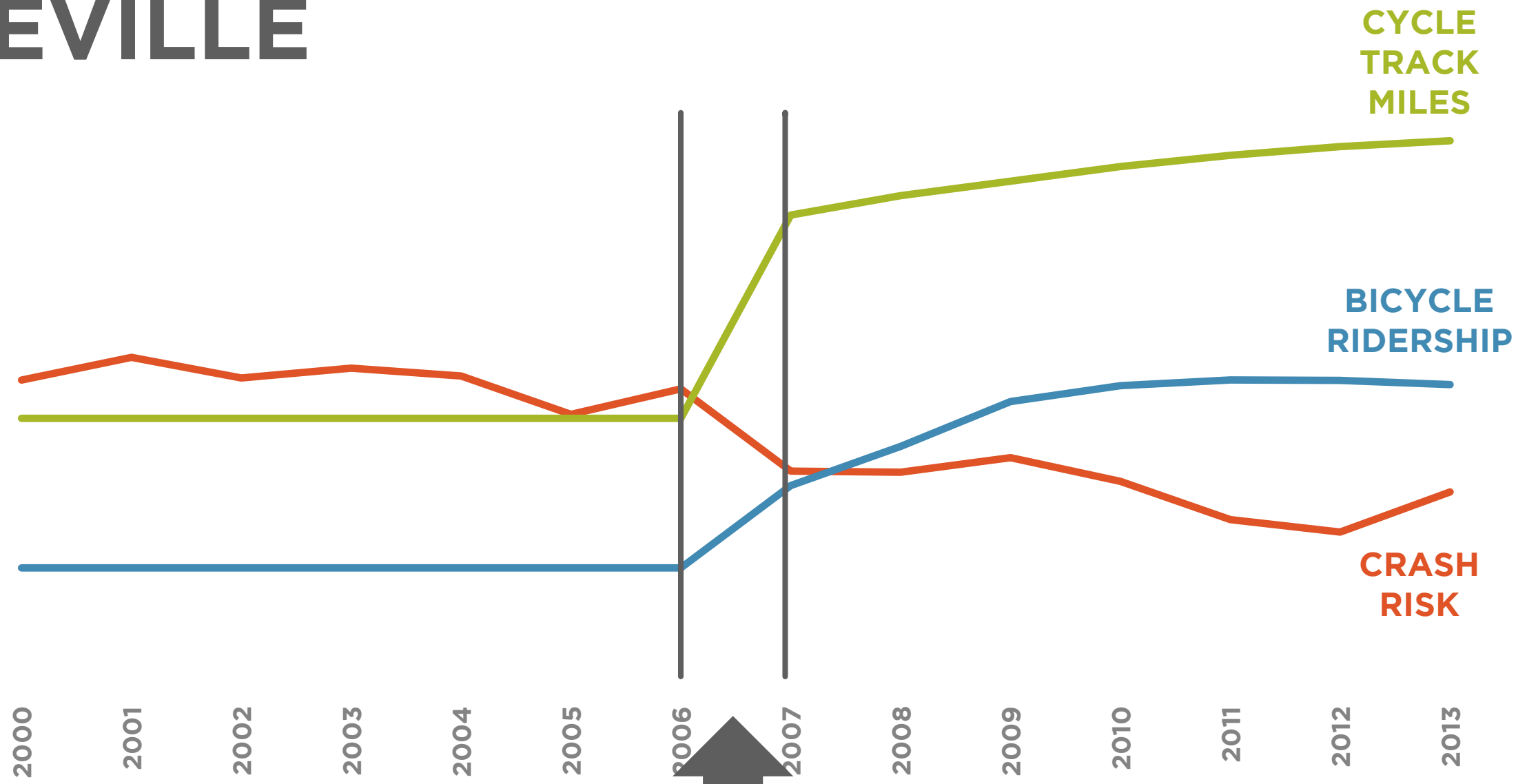


2006:
7 miles



2007:
48 miles

SEVILLE



SOURCE: MARQUES AND HERNANDEZ-HERRADOR

WHAT DO THESE PROJECTS LOOK LIKE?



WHAT DO THESE PROJECTS LOOK LIKE?



Photo Credit: The Big Jump, PeopleforBikes, Baltimore, MD

WHAT DO THESE PROJECTS LOOK LIKE?



WHAT DO THESE PROJECTS LOOK LIKE?



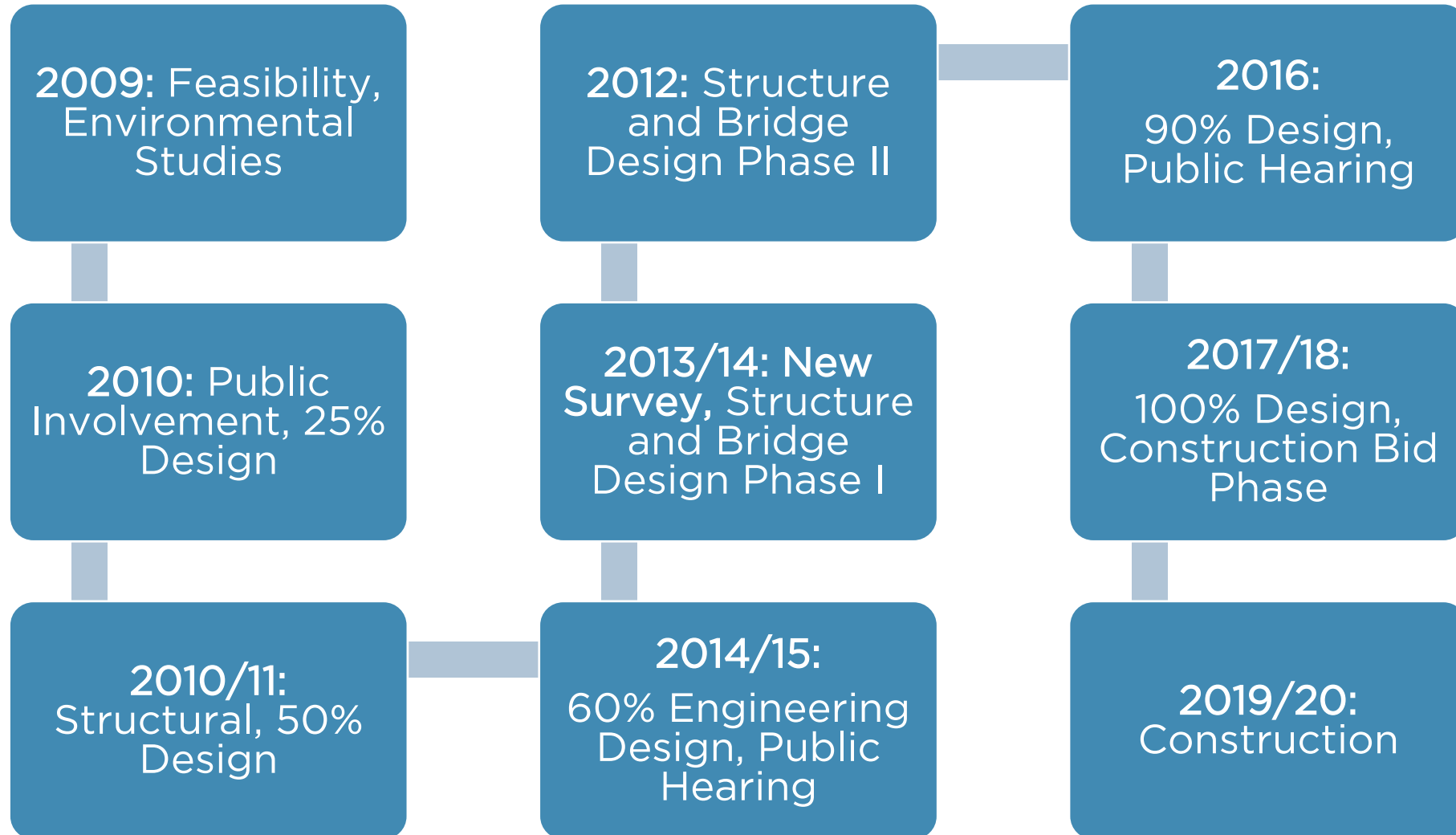
Photo Credits: City of Calgary

WHAT DO THESE PROJECTS LOOK LIKE?



WHY?

RESULTS TAKE FOREVER



RESULTS TAKE FOREVER

Use of Edmonton's bike lanes nearly doubled in first month, numbers show

'I love that Edmonton is becoming more accessible on the bicycle'

David Thurton - CBC News - Posted: Aug 10, 2017 6:00 PM MT | Last Updated: August 11, 2017

SOURCE: UNIVERSITY OF ALBERTA

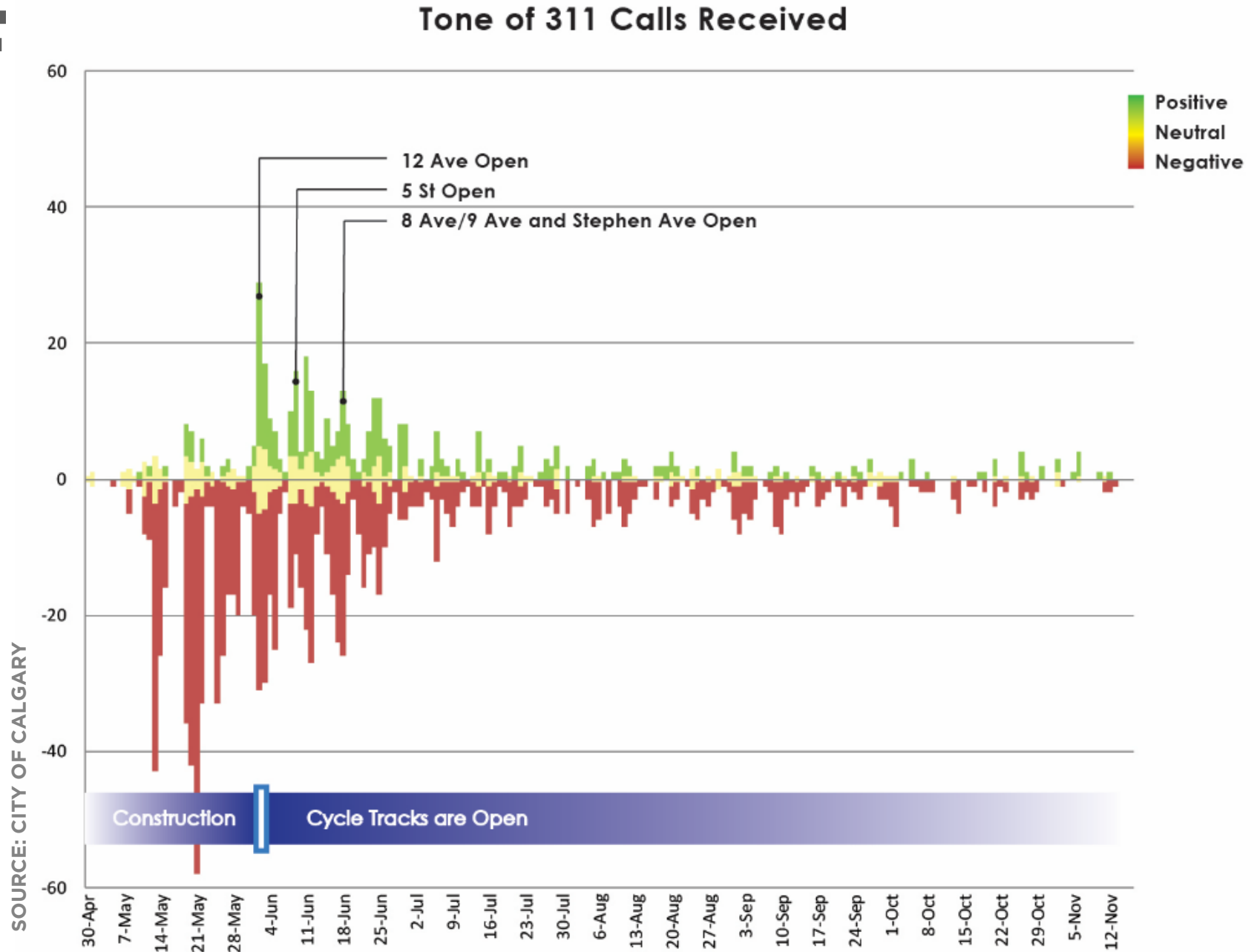
Protected bike lanes reduce stress, travel time for riders: study

Expanded connectivity means shorter trips and lower stress for bicycle commuters, U of A student's research shows.

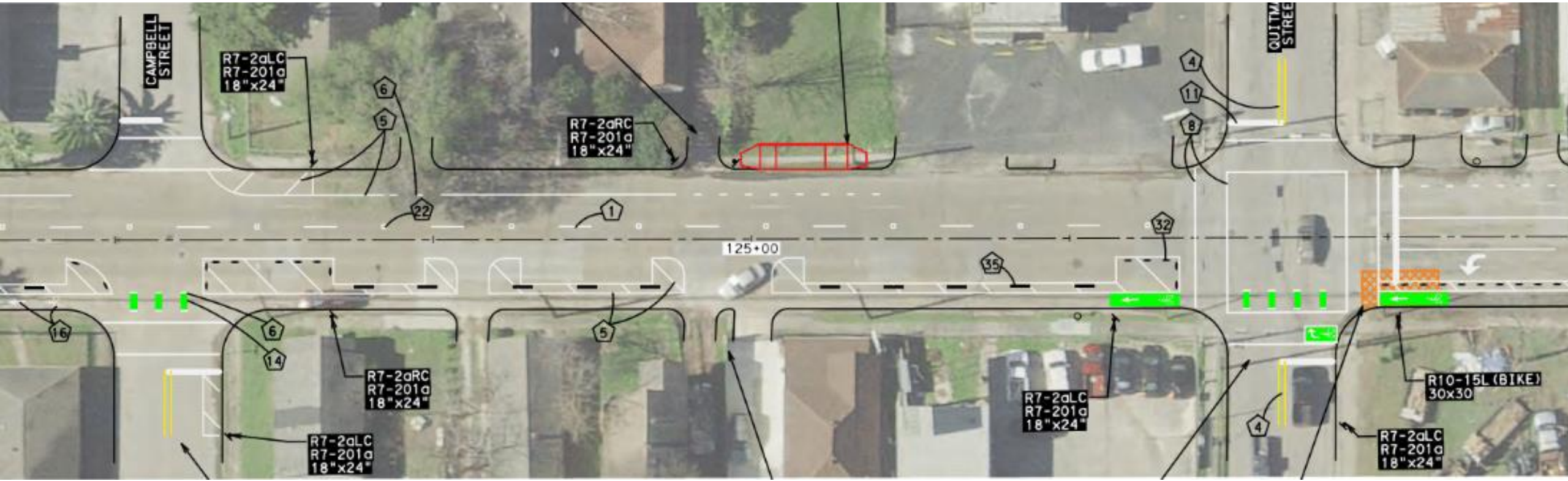


SOURCE: CANADIAN BROADCASTING CORPORATION

FEAR OF CHANGE



PERFECT AS THE ENEMY OF GOOD



IT IS ABOUT MORE THAN SIDEWALKS AND BIKEWAYS

HOUSTON OFFERS OPPORTUNITY FOR ALL. WE CELEBRATE OUR DIVERSITY OF PEOPLE, IDEAS, ECONOMY, CULTURE, AND PLACES. WE PROMOTE HEALTHY AND RESILIENT COMMUNITIES THROUGH SMART CIVIC INVESTMENTS, DYNAMIC PARTNERSHIPS, EDUCATION, AND INNOVATION. HOUSTON IS THE PLACE WHERE ANYONE CAN PROSPER AND FEEL AT HOME.

ADOPTED BY HOUSTON CITY COUNCIL OCTOBER 2015.



SOURCE: CITY OF HOUSTON

LIMITED FUNDING



STRENGTH OF QUICK BUILD



Doesn't let
PERFECT be the
ENEMY OF THE
GOOD.



Allows managing
FEAR OF
CHANGE.



Provides quick
proof of concept
instead of having
RESULTS TAKE
FOREVER.



Allows for
changes to be
made even when
there is **LIMITED**
FUNDING.

WHAT MAKES IT QUICK?

- Cheap materials, quick installation
- Consolidated/iterative planning and design process
- Field engineering
- Dedicated staff and consultant support
- Expedited review phases; Coordinated agency teams
- Political priority
- **It is NOT a chance to skip or skim through:**
 - Public engagement
 - Permitting / approvals
 - Engineering evaluation and quality control

KEY CONSIDERATIONS

- Who makes decisions?
- Design for safety, accessibility, equity
- Community engagement
- Maintenance

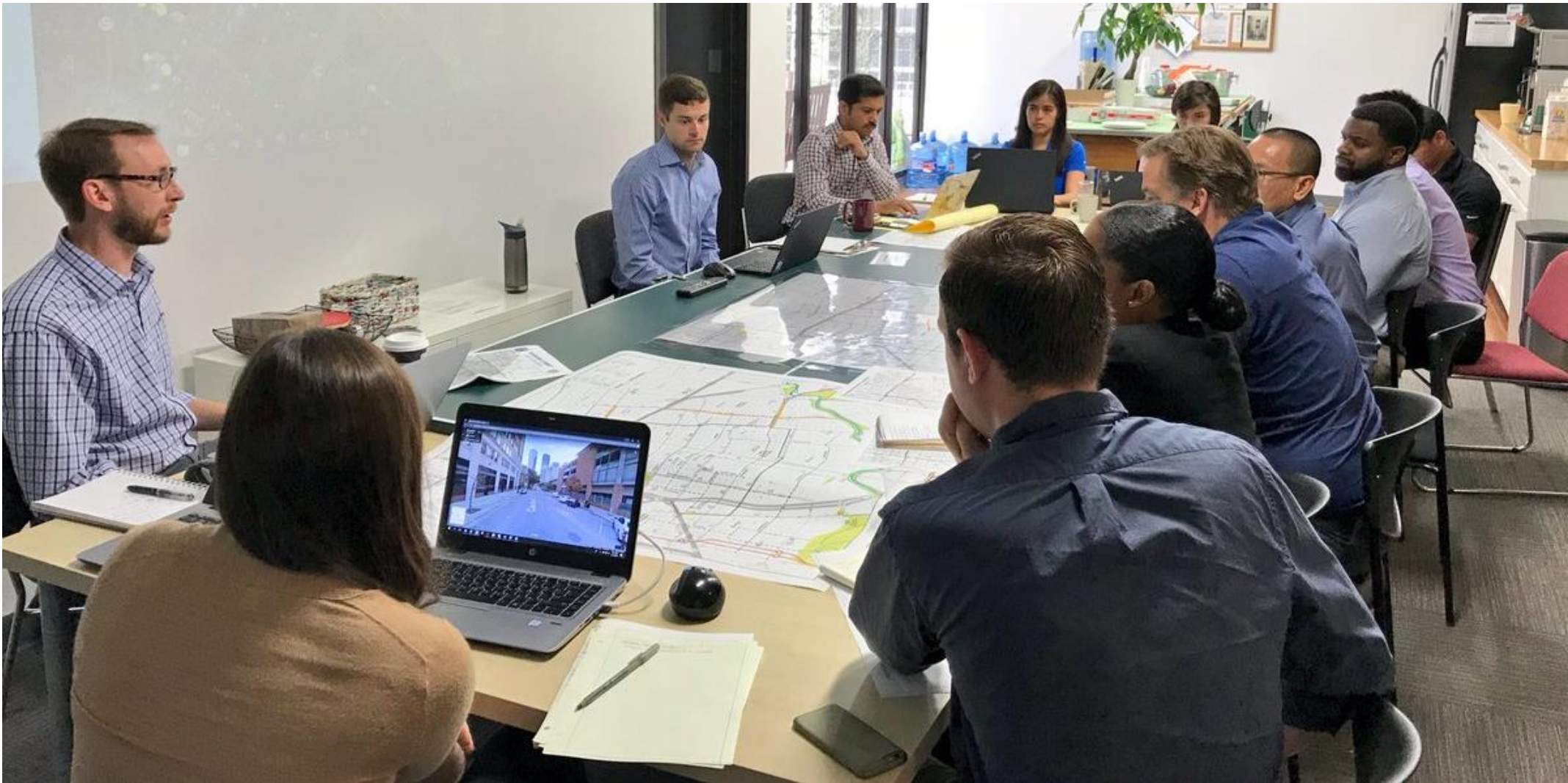
WHO MAKES DECISIONS?



DESIGN FOR SAFETY, ACCESSIBILITY, EQUITY

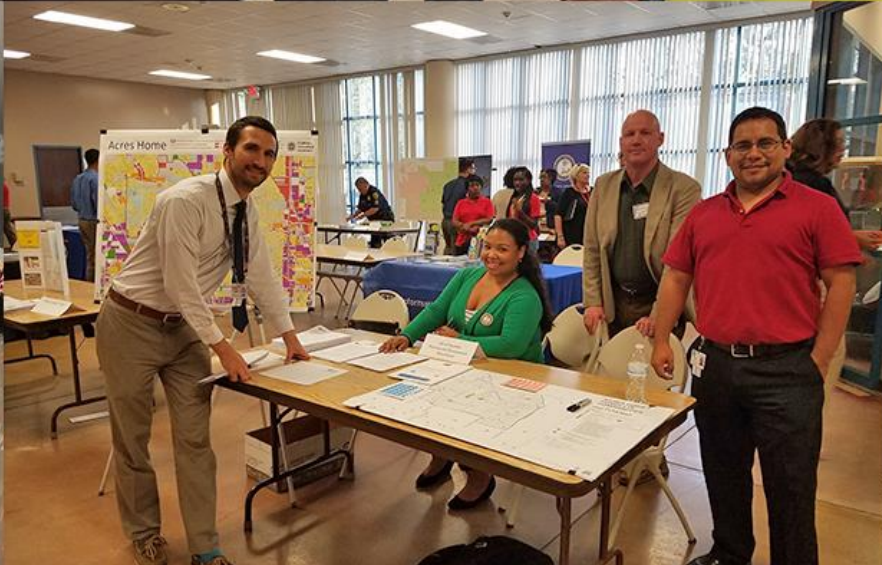


ENGAGEMENT & COMMUNITY KNOWLEDGE



ENGAGING THE PUBLIC

SOURCE: CITY OF HOUSTON



ENGAGEMENT DOESN'T STOP WITH OPENING DAY



SOURCE: CITY OF EDMONTON

MAINTENANCE



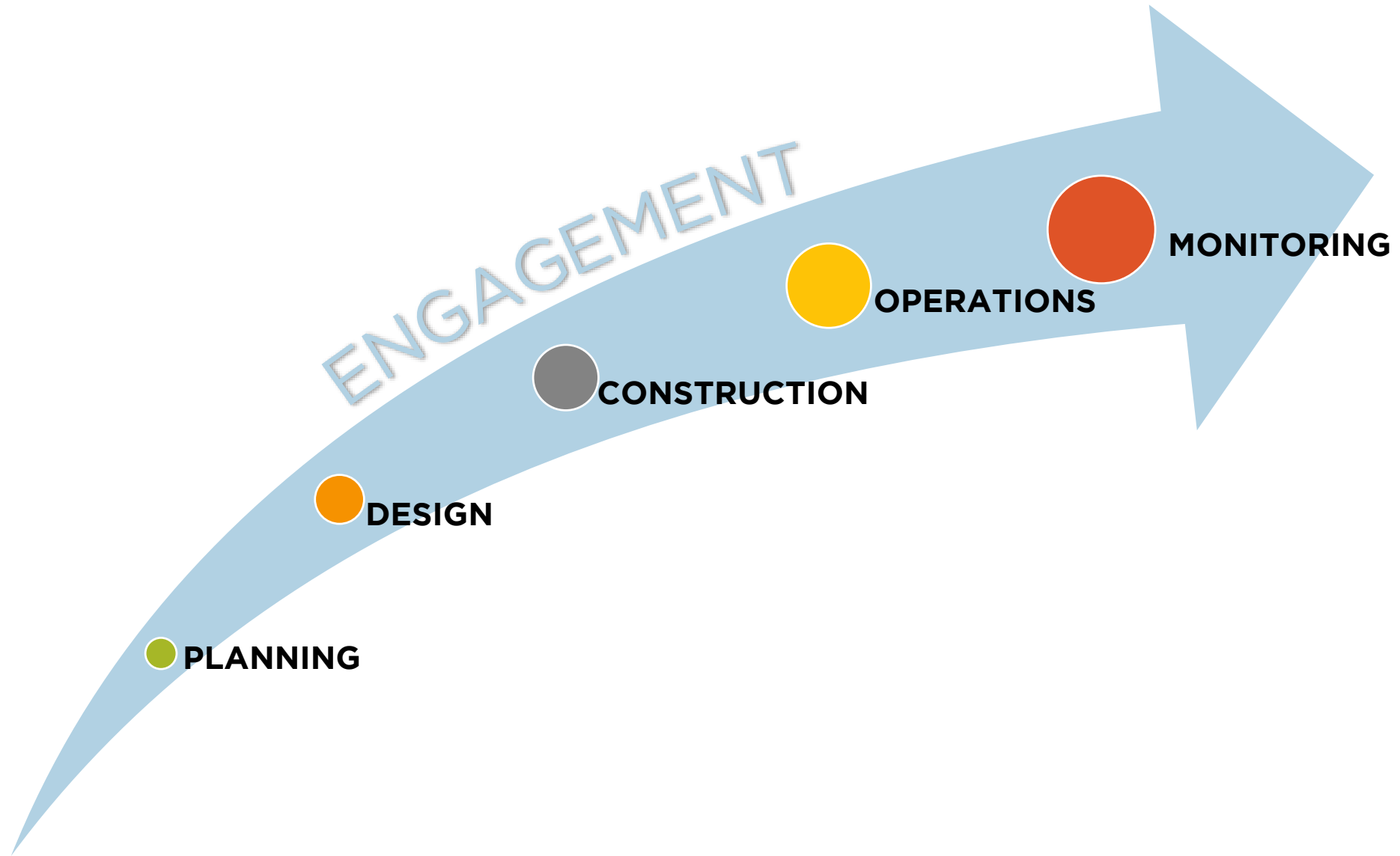
DESIGN & OPERATIONS WORKING TOGETHER

TOOLE
DESIGN



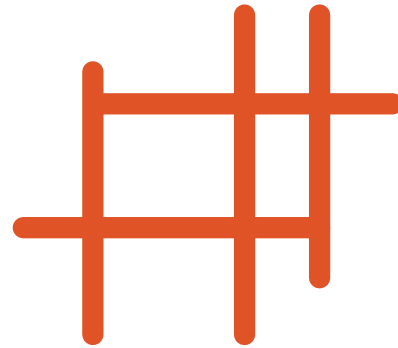
SOURCE: CITY OF EDMONTON

HOW CAN WE DO THIS HERE?





**MAINTAIN
CHAMPIONS**

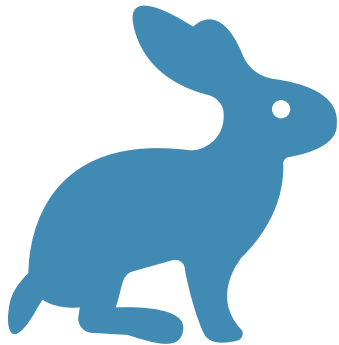


**EMPHASIZE the
NETWORK in PUBLIC
ENGAGEMENT**



**DESIGN SHOULD
PRIORITIZE SAFETY**

INGREDIENTS FOR SUCCESS



**FOCUS ON PROJECTS
that SHOW RESULTS
QUICKLY**



**ONE COLLABORATIVE
TEAM of DESIGNERS
and OPERATORS**



**INITIAL PROJECTS are
ONLY THE BEGINNING**

Fast facts about the cycle track pilot

2% of 300 km of downtown travel lanes used for **6.5 km** of cycle tracks



[allowing more people to choose to travel by bike.]

1.2 million bicycle trips



[between June 18, 2015 and November 20, 2016]

90 seconds longest delay to people driving



[travelling entire 12 Avenue cycle track corridor during morning peak period.]



Council approved budget
\$7.1M

Pilot cost (to date)
(\$1.65M under budget)
\$5.45M



130 net increase of parking stalls created downtown to offset the loss of parking along cycle track routes.



30% of people riding cycle tracks are women, up from 22% before cycle tracks.



Unlawful sidewalk riding has decreased from an average of 16% (pre-cycle tracks) to **2%**



67% of Calgarians support the pilot project. (2016 Ipsos survey)

100+ adjustments [made to improve traffic, loading and parking during the pilot.]



SOURCE: CITY OF CALGARY

MEASURE PERFORMANCE & SHARE STORIES



Another 80s Erin
@physedchick

Replying to [@tylergolly](#) and [@tooledesign](#)

Our 4.5yo biked 13km in protected bike lanes one day this summer. She's got confidence, power and a sustainable future.



Greg Wengreniuk
@GregWengreniuk

Replying to [@tylergolly](#) and [@tooledesign](#)

This year I turned 50. I started cycling and now commute 12.5 km to work on the grid and shared paths. My rush hour commute decreased from 40 to 35 mins, my stress decreased, and I'm in better shape now than in my 30s. My energy levels are up and match my pride 🚲



Richard Liebrecht
@rwliebrecht

Replying to [@tylergolly](#) [@YEGclimate](#) and [@tooledesign](#)

It's made riding around with our 21-month old in a chariot far less nerve wracking. A big part of our family's fitness plan.



Calvin Binnema
@phiphophy

Replying to [@tylergolly](#) and [@tooledesign](#)

Age 59 - decided to start cycling to work this spring because there is now a fairly direct route to yegdt from S Clareview along mostly MUP or bike grid. Now committing to trying year round. Commute is no longer than transit. Improved physical & mental health.



J I Schmid
@jarvisschmid

Replying to [@tylergolly](#) and [@tooledesign](#)

In yyc, my 7 y/o rode to drama camp downtown with me for 10 days (I was going to work). 6.5 km each way during rush hour. Without lanes, we would have drove or not done the camp.

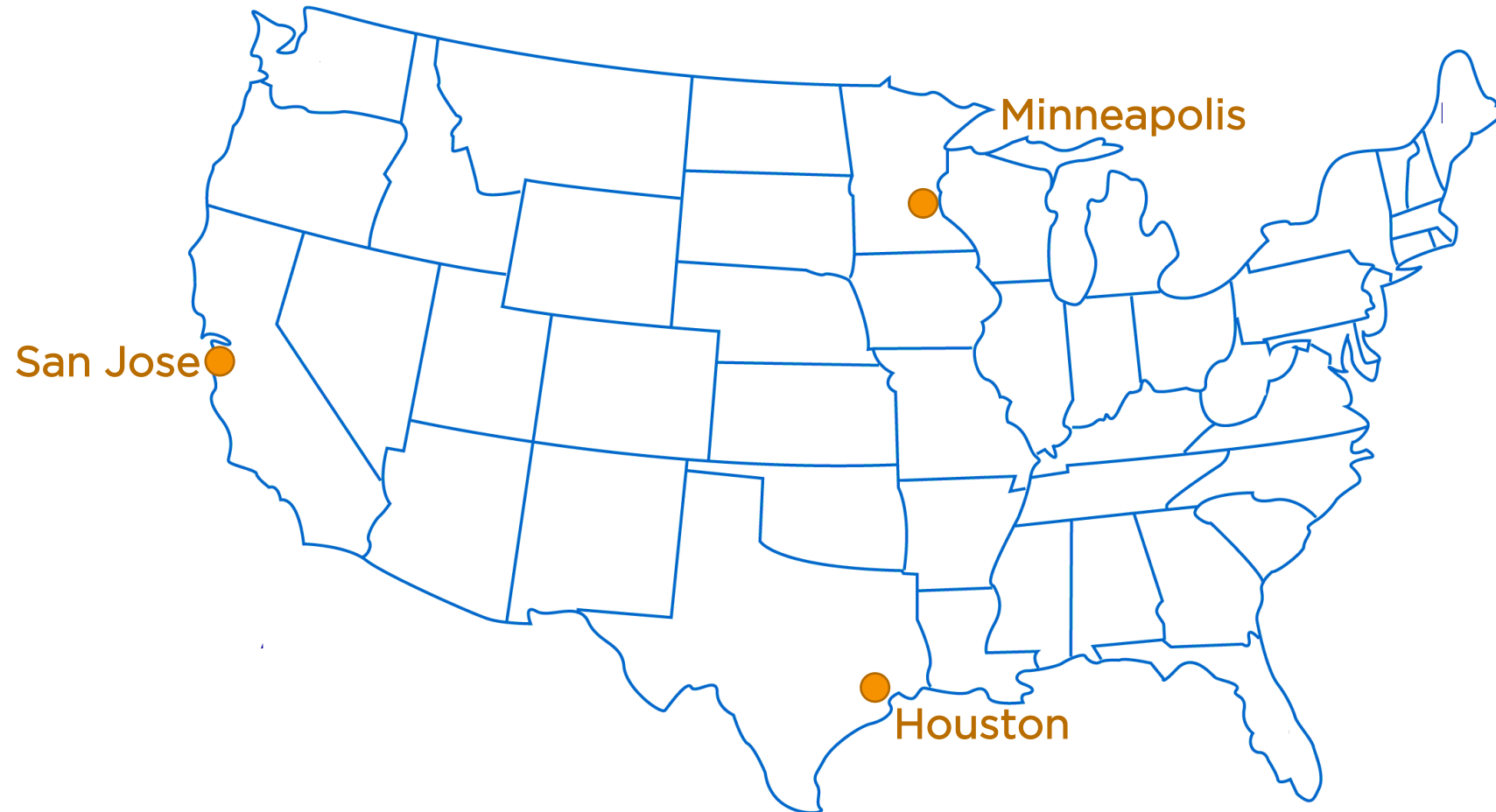


Recovering Yoga Teacher
@erinlovesyoga

Replying to [@tylergolly](#) and [@tooledesign](#)

Safe bike infrastructure makes me feel seen (literally & figuratively). It acknowledges that I exist, & that my safety matters. It's as simple & profound as that.

CASE STUDIES





AANDERSON@TOOLEDESIGN.COM

www.tooledesign.com

@tooledesign

@AliaAnderson

QUICK BUILD

HARRIS COUNTY – CITY OF HOUSTON

Amar Mohite
Director, Planning & Infrastructure
Office of Commissioner Rodney Ellis



HARRIS COUNTY
PRECINCT ONE

BUILDING PARTNERSHIPS

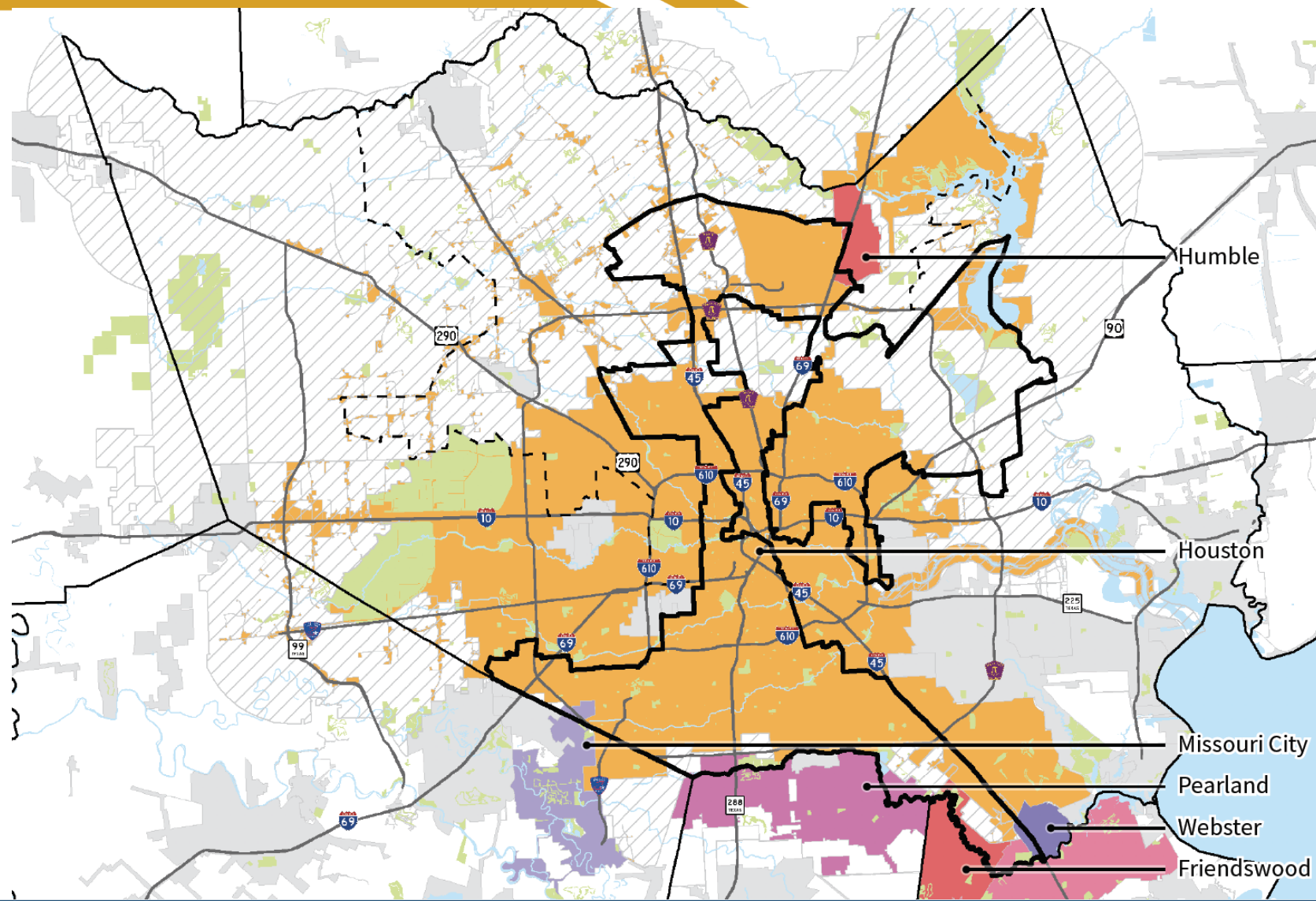


**CHAMPION
CHALLENGE
CELEBRATE**



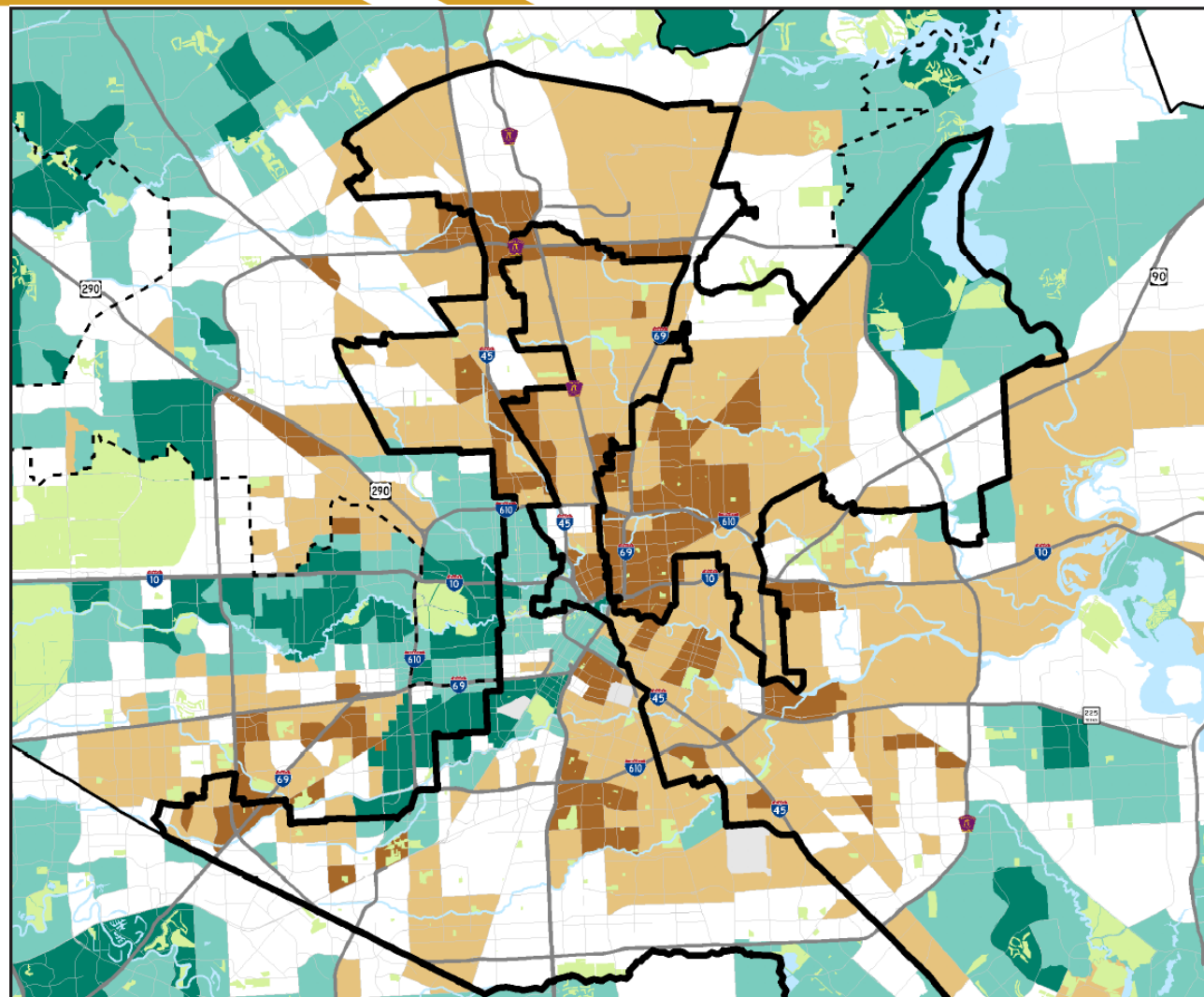
**HARRIS COUNTY
PRECINCT ONE**

HARRIS COUNTY PRECINCT ONE



HARRIS COUNTY
PRECINCT ONE

HARRIS COUNTY PRECINCT ONE

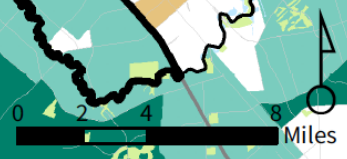


MEDIAN HOUSEHOLD INCOME

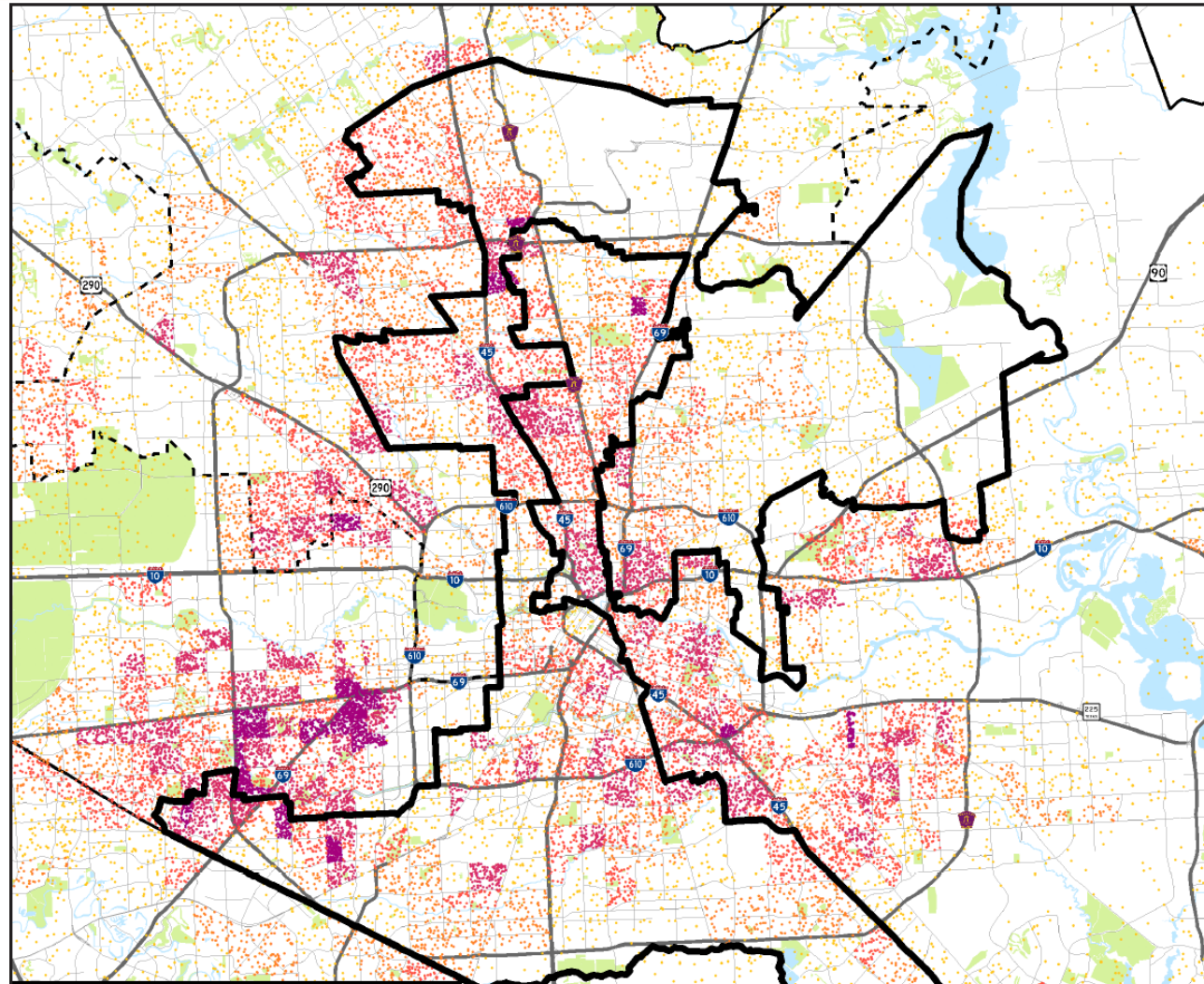
LEGEND		Median Household Income	
	Precinct 1		< \$27,500
	Counties		\$27,500 - \$44,000
	Precincts		\$44,000 - \$66,000
	Highways		\$66,000 - \$110,000
	Major Parks		> \$110,000



**HARRIS COUNTY
PRECINCT ONE**



HARRIS COUNTY PRECINCT ONE



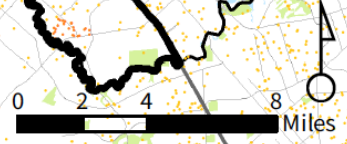
POPULATION BELOW POVERTY

LEGEND

- ▣ Precinct 1
- ▣ Counties
- ▣ Precincts
- Highways
- Major Parks

Population Below Poverty

- One Dot = 25 People
- More Dense
- Less Dense



HARRIS COUNTY
PRECINCT ONE

Rodney Ellis
COMMISSIONER
PRECINCT ONE

BAYOU GREENWAY 2020

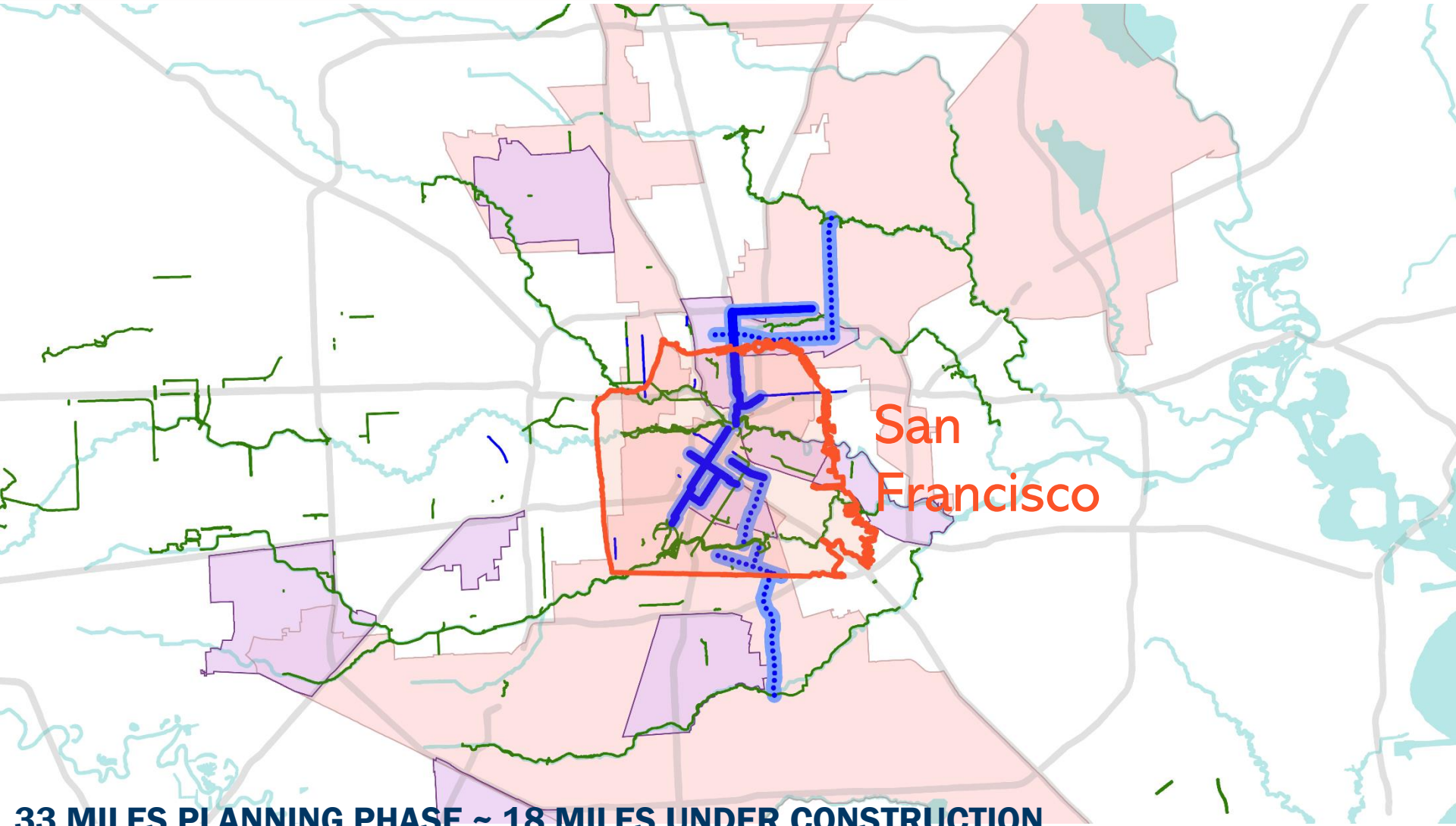


150 MILES OF TRAILS
3,000 ACRES OF GREENSPACE
\$220 M PUBLIC-PRIVATE PARTNERSHIP



HARRIS COUNTY
PRECINCT ONE

EVERYTHING IS BIGGER IN TEXAS



33 MILES PLANNING PHASE ~ 18 MILES UNDER CONSTRUCTION



**HARRIS COUNTY
PRECINCT ONE**

HARRIS COUNTY

- FUNDING
- NETWORK PLANNING
- DESIGN
- CONSTRUCTION
- 1-YEAR MAINTENANCE

DEPARTMENTS

- HARRIS COUNTY ENGINEERING

CITY OF HOUSTON

- COMMUNITY & STAKEHOLDER ENGAGEMENT - OUTREACH
 - PLANNING
 - DESIGN
 - CONSTRUCTION
- DESIGN REVIEW & APPROVAL
- LONG TERM MAINTENANCE

DEPARTMENTS

- PLANNING & DEVELOPMENT
- PUBLIC WORKS
- PARKS & RECREATION
- SOLID WASTE
- PARKING

DESIGN TEAM & PARTNERS

PLANNING & DESIGN

- TRAFFIC ENGINEERS INC.
- TOOLE DESIGN

PROJECT MANAGEMENT

- JONES | CARTER

OTHER AGENCIES

- HOUSTON METRO
- TXDOT
- MANAGEMENT DISTRICTS

ORGANIZATION

- BIKE HOUSTON
- HOUSTON BIKE SHARE
- SUPER NEIGHBORHOODS

LESSONS LEARNT

LEADERSHIP MATTERS



HARRIS COUNTY
PRECINCT ONE

Rodney Ellis
COMMISSIONER
PRECINCT ONE

LESSONS LEARNT

LEADERSHIP MATTERS ROLES & RESPONSIBILITIES



**HARRIS COUNTY
PRECINCT ONE**

LESSONS LEARNT

LEADERSHIP MATTERS
ROLES & RESPONSIBILITIES
RULES OF ENGAGEMENT



LESSONS LEARNT

- LEADERSHIP MATTERS
- ROLES & RESPONSIBILITIES
- RULES OF ENGAGEMENT
- COMMUNITY ENGAGEMENT



NEW BIKE LANES CAUSING CONFUSION
THIRD WARD



HARRIS COUNTY
PRECINCT ONE

Rodney Ellis
COMMISSIONER
PRECINCT ONE



5:11 | 95°

LESSONS LEARNT

LEADERSHIP MATTERS
ROLES & RESPONSIBILITIES
RULES OF ENGAGEMENT
COMMUNITY ENGAGEMENT
TEAM & PARTNERS



LESSONS LEARNT

LEADERSHIP MATTERS
ROLES & RESPONSIBILITIES
RULES OF ENGAGEMENT
COMMUNITY ENGAGEMENT
TEAM & PARTNERS
PROJECTS EVOLVES



HARRIS COUNTY
PRECINCT ONE

LESSONS LEARNT

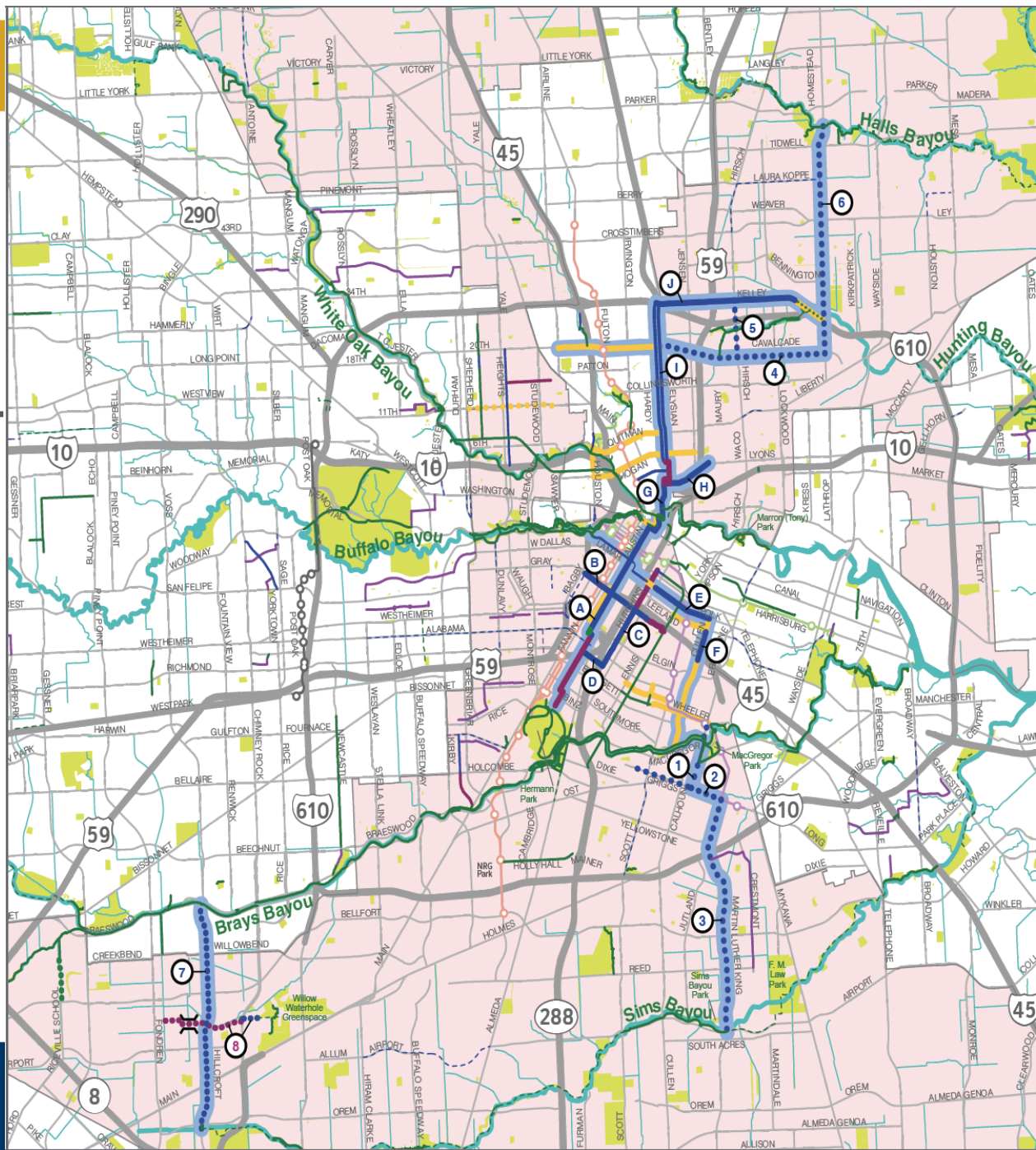
LEADERSHIP MATTERS
ROLES & RESPONSIBILITIES
RULES OF ENGAGEMENT
COMMUNITY ENGAGEMENT
TEAM & PARTNERS
PROJECTS EVOLVE
MAINTENANCE



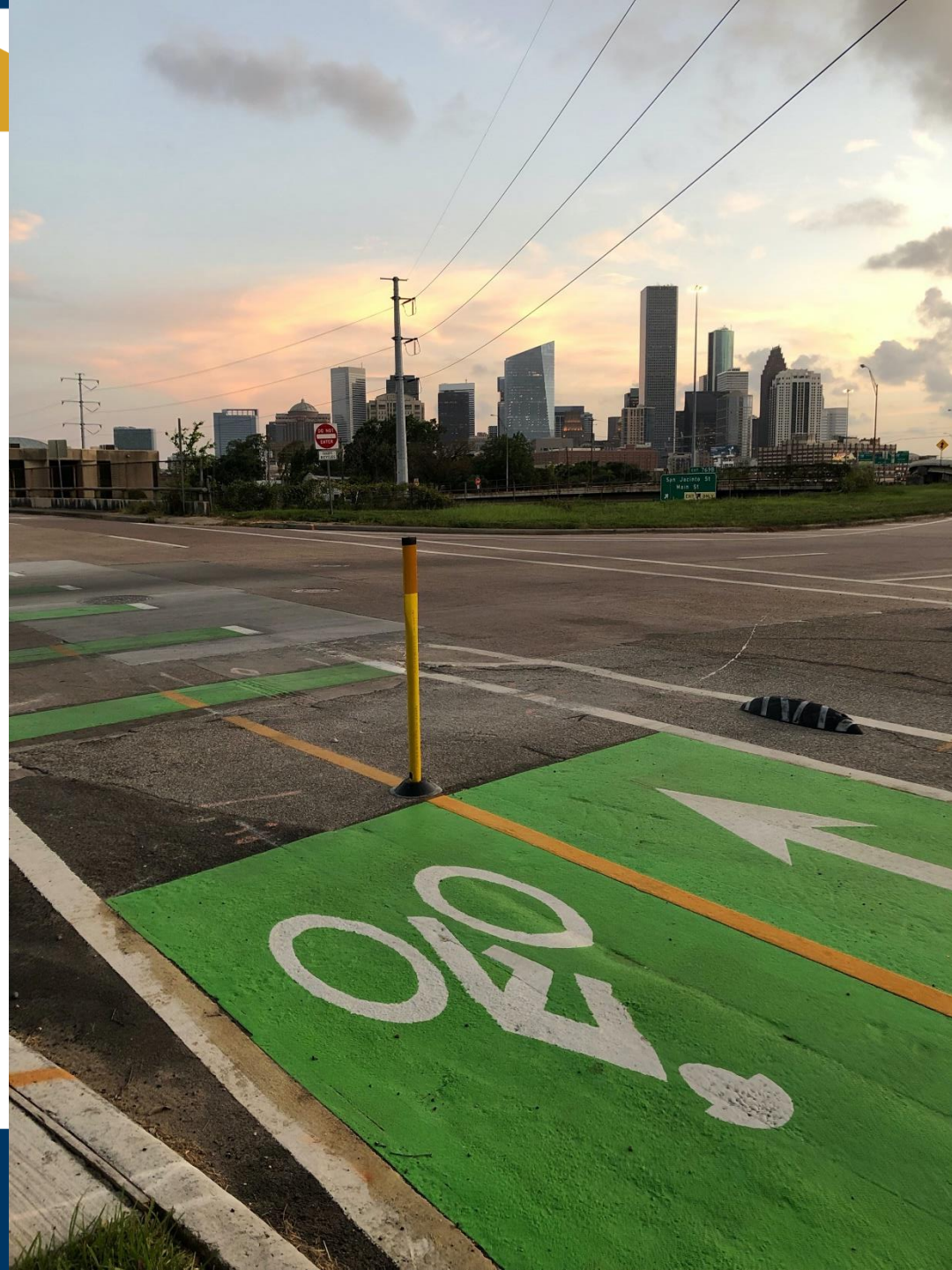
HARRIS COUNTY
PRECINCT ONE

LESSONS LEARNT

- LEADERSHIP MATTERS
- ROLES & RESPONSIBILITIES
- RULES OF ENGAGEMENT
- COMMUNITY ENGAGEMENT
- TEAM & PARTNERS
- PROJECTS EVOLVE
- MAINTENANCE
- LOOKING FORWARD



QUESTIONS



HARRIS COUNTY
PRECINCT ONE

Discussion

⇒ **Send us your questions**

⇒ **Follow up with us:**

⇒ **Alia Anderson aanderson@tooledesign.com**

⇒ **Amar Mohite amar.mohite@cp1.hctx.net**

⇒ **Matthew Dyrdaahl matthew.dyrdaahl@minneapolismn.gov**

⇒ **John Brazil john.brazil@sanjoseca.gov**

⇒ **Peter Bennett peter.bennett@sanjoseca.gov**

⇒ **General Inquiries pbic@pedbikeinfo.org**

⇒ **Archive at www.pedbikeinfo.org/webinars**